



Network of European Research Infrastructures for Earthquake Risk Assessment and Mitigation

## Participants

- ▶ **ETHZ:** Eidgenössische Technische Hochschule Zurich
- ▶ **ORFEUS:** Observatories and Research Facilities for European Seismology
- ▶ **KNMI:** Koninklijk Nederlands Meteorologisch Instituut
- ▶ **INGV:** Istituto Nazionale di Geofisica e Vulcanologia
- ▶ **VCE:** Vienna Consulting Engineers
- ▶ **EMSC:** Euro-Mediterranean Seismological Centre
- ▶ **CNRS:** Centre National de la Recherche Scientifique
- ▶ **EUCENTRE:** European Centre for Training and Research in Earthquake Engineering
- ▶ **GFZ:** Deutsches GeoForschungsZentrum
- ▶ **KOERI:** Kandilli Observatory and Earthquake Research Institute
- ▶ **AMRA:** Analisi e Monitoraggio del Rischio Ambientale
- ▶ **AIT:** Austrian Institute of Technology
- ▶ **AUTH:** Aristotelis University of Thessaloniki
- ▶ **NIEP:** National Institute of Earth Physics
- ▶ **IMO:** Icelandic Meteorological Organisation
- ▶ **NERC-BGS:** Natural Environment Research Council - British Geological Survey
- ▶ **FFCUL:** Fundacao da Faculdade de Ciencias da Universidade de Lisboa
- ▶ **KU Leuven:** Katholieke Universiteit Leuven
- ▶ **JKU:** Josef Kung University Linz
- ▶ **KIT:** Karlsruhe Institute of Technology
- ▶ **METU:** Middle East Technical University
- ▶ **CAR:** Cambridge Architectural Research
- ▶ **CSIC:** Spanish National Research Council
- ▶ **NOA:** National Observatory Athens
- ▶ **ULeicester:** University of Leicester
- ▶ **NORSAR**
- ▶ **ULiverpool:** University of Liverpool
- ▶ **ITSAK:** Institute of Engineering Seismology and Earthquake Engineering

## Network of European Research Infrastructures for Earthquake Risk Assessment and Mitigation

**NERA** (2010-2014) is an EC infrastructure project in the 7th Framework programme. The overall aim of NERA is to achieve a measurable improvement and a long-term impact in the assessment and a reduction of the vulnerability of constructions and citizens to earthquakes. NERA will integrate key research infrastructures in Europe to monitor earthquakes and assess their hazard and risk, and will combine expertise in observational and strong-motion seismology, modelling, geotechnical and earthquake engineering to develop activities to improve the use of infrastructures and facilitate the access to data.

**NERA** will ensure the provision of high quality services, including access to earthquake data and parameters and to hazard and risk products and tools.

**NERA** will coordinate with other EC projects (SHARE, SYNER-G) a comprehensive dissemination effort and contribute to the EPOS ESFRI infrastructure and GEM OECD program.

The **NERA** consortium consists of 28 participants (European universities and research centres) executing 22 different activities:

- ▶ 1 Management Activity,
- ▶ 9 Networking Activities (NA),
- ▶ 5 Joint Research Activities (JRA),
- ▶ 4 activities providing grants for Transnational Access (TA) and
- ▶ 3 specialised Service Access activities (SA).



Project Coordinator: Prof. Domenico Giardini  
ETHZ/ORFEUS

Project Manager: Dr. Torild van Eck  
ORFEUS/KNMI

NERA  
Project Office: Wilhelminalaan 10  
3732 GK De Bilt  
The Netherlands

T. +31 (0)30 2206 334  
E. nera @knmi.nl

# NERA

Network of European Research Infrastructures  
for Earthquake Risk Assessment and Mitigation

## ▶ Transnational Access

The European Commission (EC) supports grants for access to European seismological centres and infrastructures for periods of research and joint technical developments within NERA.

The following four research centres are provide grants for visits:

KOERI (Turkey) Contact: Can Zulfikar  
(can.zulfikar@boun.edu.tr)  
<http://www.koeri.boun.edu.tr/depremmuh/nera.html>

NIEP (Romania) Contact: Constantin Ionescu  
(viorel@infp.ro)  
<http://www.infp.ro/news/nera-project>

AMRA (Italy) Contact: Aldo Zollo  
(aldo.zollo@unina.it)  
<http://www.rissclab.unina.it/content/view/733/304/lang,en/>

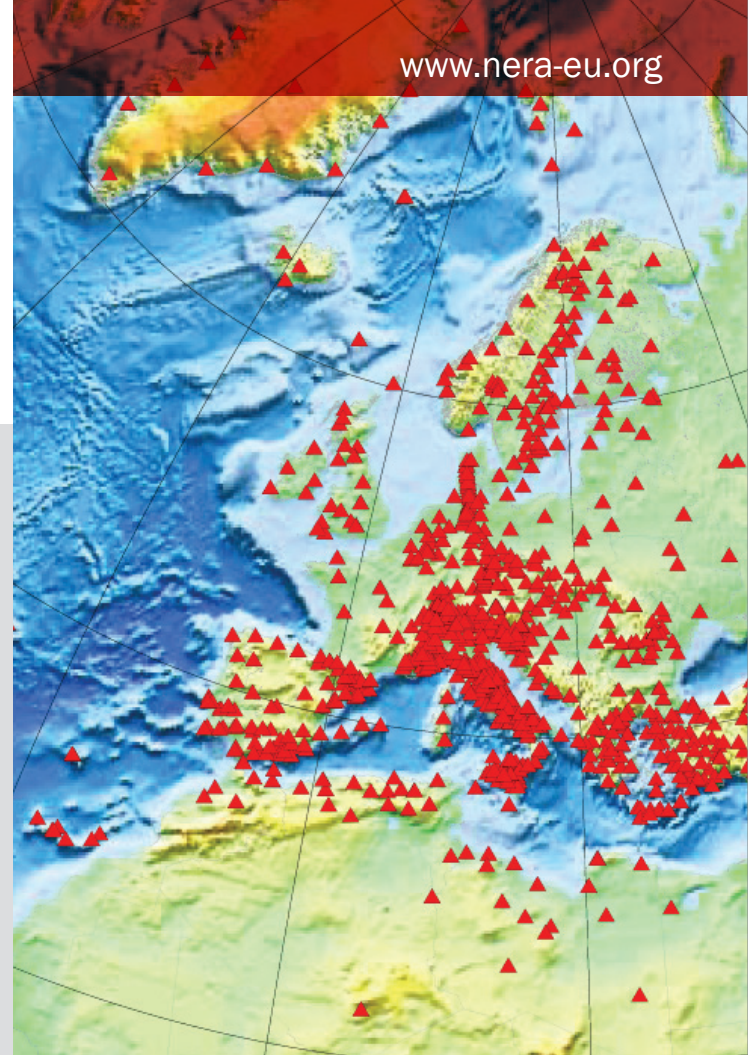
NORSAR (Norway). Contact: Johannes Schweitzer  
(johannes.schweitzer@norsar.no)  
<http://www.norsar.no/c-148-NERA.aspx>

Grants will cover travel and living expenses for periods of up to 3 months, depending on the respective infrastructure, and are primarily open for researchers from the EU Member States and Associated States. Grants applications should be submitted to the contact for each infrastructure.

Additional information is available through the NERA project web pages: [www.nera-eu.org](http://www.nera-eu.org).

## ▶ Networking Activities

- NA1 Management
- NA2 Expanding access to seismic waveforms in the Euro-Med region
- NA3 Networking accelerometric networks and SM data users
- NA4 Networking European Rapid Response Networks
- NA5 Networking near-fault observatories
- NA6 Networking field testing infrastructures
- NA7 Classification and inventory of European building stock
- NA8 Networking School Seismology programs
- NA9 European Mediterranean Earthquake Portal and Services
- NA10 Dissemination and integration



## ▶ Service Activities

- EMSC [www.emsc-csem.org](http://www.emsc-csem.org)
- ORFEUS [www.orfeus-eu.org](http://www.orfeus-eu.org)
- EFEHR (soon accessible)

## ▶ Joint Research Activities

- JRA1 Waveform modelling and site coefficients for basins response and topography
- JRA2 Tools for real-time seismology, acquisition and mining
- JRA3 Coherence of near-fault ground motion spatial distribution and ground strain
- JRA4 Real-time seismic risk assessment and decision support
- JRA5 Vulnerability assessment from field monitoring